

I.	PURPOSE	E - 1
II.	GENERAL INFORMATION	E - 1
III.	EMERGENCY CLASSIFICATIONS AND MACS MODES	E - 2
	Alert	E - 2
	Site Area Emergency	E - 2
	General Emergency	E - 3
IV.	NOTIFICATION PROCEDURES	E - 3
V.	INCIDENT COMMAND POST	E - 3
VI.	ASSESSMENT OF CONTAMINATION IN BOULDER COUNTY	E - 3
VII.	COMMUNICATIONS	E - 4
VIII.	IN PLACE SHELTERING OR WARNINGS TO EVACUATE	E - 4
	Sample Message From Boulder County Authorities Requiring In Place Sheltering	E - 5
	Sample Message From Boulder County Authorities Requiring Evacuation	E - 5
IX.	EVACUATION PROCEDURES	E - 5
X.	PROTECTIVE PROCEDURES FOR TCP WARNING EVACUATION AND ASSESSMENT PERSONNEL	E - 6
XI.	TRAFFIC CONTROL POINT PROCEDURES	E - 6
XII.	BOULDER ROCKY FLATS INCIDENT COMMAND SYSTEM	E - 7
XIII.	ELEMENTS OF MACS - SPECIAL INSTRUCTIONS	E - 8
	APPENDIX 1 - MAP OF THE ROCKY FLATS PLANT	E - 1 - 1
	APPENDIX 1 - ROCKY FLATS PLANT AREA MAP	E - 1 - 2
	APPENDIX 1 - EMERGENCY RESPONSE EVACUATION AREAS AND EPZ POPULATION DATA	E - 1 - 3
	APPENDIX 2 - BOULDER COUNTY TRAFFIC AND ACCESS CONTROL POINTS	E - 2 - 1
	APPENDIX 3 - TRAFFIC AND ACCESS CONTROL POINTS - EVACUATION AREAS	E - 3 - 1
	APPENDIX 4 - BOULDER COUNTY REGISTRATION OF EXIT PERSONNEL	E - 4 - 1
	APPENDIX 4 - BOULDER COUNTY PERSONNEL EXPOSURE LOG	E - 4 - 2
	APPENDIX 4 - CITY OF BOULDER PERSONNEL EXPOSURE LOG	E - 4 - 3
	APPENDIX 5 - INCIDENT COMMAND POST	E - 5 - 1
	APPENDIX 6 - BOULDER ROCKY FLATS INCIDENT COMMAND ORGANIZATION	E - 6 - 1
	APPENDIX 7 - NOTIFICATION LIST	E - 7 - 1
	APPENDIX 8 - ROCKY FLATS PLANT OFFSITE NOTIFICATION FORM	E - 8 - 1

ROCKY FLATS RADIOLOGICAL INCIDENT RESPONSE PLAN ANNEX E

I. PURPOSE

This annex to the Boulder County-City of Boulder Emergency Operations Plan defines agency responsibilities and coordinated actions required to respond to an off-site contamination accident at the Rocky Flats Environmental Technology Site. The **Boulder Rocky Flats Incident Command** section of this plan structures an incident command and control system functionally similar to the Colorado Incident Command System (CICS). The differences between the Boulder Incident Command System and CICS principles are necessitated by the response requirements peculiar to a Rocky Flats incident.

Ideally, a response plan should contain no step by step "**how to**" instructions.

Specific training for all positions should allow the plan to concentrate on obtaining major objectives rather than detail the actions required to accomplish interim goals. Simulated training and actual occurrences of many emergencies allow "**real time**" training and the accumulation of a storehouse of information which becomes standard practice in reacting to these emergencies. Unfortunately, outside of radiological training, little training has been directed at responding to a Rocky Flats incident. Until such time that adequate training is provided all response personnel, this plan must outline, in some detail, actions to be taken to protect the public as well as the responding forces.

II. GENERAL INFORMATION

The Rocky Flats Environmental Technology Site is owned by the United States Department of Energy (DOE) and operated by a private contractor. The previous functions of the facility were metal component production and chemical processing of scrap radioactive material parts for nuclear weapons. Those production activities were fabrication of plutonium, uranium, and nonradioactive metals such as beryllium and stainless steel. Other major activities performed at the plant were in the areas of plutonium recovery from scrap materials and varied research and development of energy programs, some of which involved other radioactive nuclides in small quantities. Nuclear manufacturing processes were

officially terminated in February 1992. The plant is in transition to decommissioning and decontamination, with a standby production capability. The plant is located on 12 square miles of government owned land on the northern boundary of Jefferson County.

Operational emergencies at the Rocky Flats Plant will be classified according to the potential threat to the offsite population. Rocky Flats will make an initial assessment of the situation; determine the area involved by the Emergency Response Planning Area (ERPA), and make preliminary protective action recommendations based on projected offsite doses and Environmental Protection Agency Protective Action Guides. Plume data will be displayed by the automated Terrain Responsive Atmospheric Code (TRAC) system in the State Emergency Operations Center. In a fast moving situation, where evacuation is not possible, State and local governments have determined that it is in the best interests of the public to institute a "default" protective action of sheltering in-place as an initial response to a **General Emergency**. Offsite response, to include protective actions, will be directed and controlled by the state, implemented by local government while being supported by state and federal resources where required.

Continued presence of radioactive and hazardous materials at the plant require special precautions be taken to ensure the health and safety of the public. The state has established an emergency planning zone (EPZ) with a 4 mile radius expandable to 10 miles, for the protection of the public. Protective action within the 4 mile radius may include sheltering, relocation and evacuation or any combination thereof. If there are protective action requirements beyond the 4 mile radius, in place sheltering is considered appropriate.

Since radiological incidents at Rocky Flats can escalate rapidly and offsite releases are possible, it is imperative that Boulder County maintain a self-contained response capability. This capability would include the following initial actions by function:

- ____ Receipt of notification
- ____ Notification of county responders
- ____ Notification of the public
- ____ Protective actions for the public
- ____ Protective action for county responders
- ____ Traffic control
- ____ Assistance to evacuees
- ____ Coordination with Rocky Flats, State EOC and other local jurisdictions including mutual aid
- ____ Public information and rumor control

It is assumed that State and Department of Energy assistance would be provided as soon as possible.

This assistance would include:

- ____ Area access control
- ____ Radiological monitoring
- ____ Consequence assessment
- ____ Protective action recommendations
- ____ Resource augmentation

III. EMERGENCY CLASSIFICATIONS AND MACS MODES

The maximum credible accident (MCA) at Rocky Flats would result in the release of 100 grams of plutonium oxide. Plutonium is, in medical terms, a bone seeker, which means the part of the body most susceptible to long term hazards from inhaling or ingesting plutonium is the bone structure. The thyroid and whole body are also considered in evaluating the medical risks from exposure to plutonium.

Emergency Classification System:

All emergencies that may occur at the Rocky Flats Environmental Technology Site are classified as "Operational Emergencies." An operational emergency is a significant accident, incident, event, or natural phenomena which will or may, seriously degrade the safety or security of Rocky Flats and in specific cases have offsite implications. There are three classes of operational emergencies; **Alert, Site Area Emergency and General Emergency.**

1. Alert:

Events are in progress or have occurred which involve an actual or potential substantial degradation of the level of safety of the facility. Any release of hazardous materials (radiological or non-radiological) is expected to be limited to small fractions of the appropriate Protective Action Guides (PAG) or Emergency Response Planning Guideline (ERPG) exposure levels. The purpose of the Alert level is to ensure that offsite emergency response personnel are promptly advised and available if the situation becomes more serious.

An **Alert** Category requires increased surveillance, the alerting of personnel and preparation of resources in case the situation worsens. Boulder Regional Communications Center (BRCC) will tone alert the emergency services group and key personnel. The Boulder Office of Emergency Management will notify the County Commissioners and the Boulder City Manager. If there is public and media interest in the incident BRCC will notify surrounding jurisdictions of the situation. The Emergency Operations Center will

not normally be manned. However, if there is media and public interest, a public information office will be opened and public information officers from participating jurisdictions will respond to the Emergency Operations Center. The BRCC will notify:

- ____ Public Information Officer-Boulder County
- ____ Public Affairs Coordinator-City of Boulder
- ____ Public Information Officer-Sheriff's Office

If there is any potential for the situation to escalate, MACS mode 3 will be initiated. See the section which immediately follows (**Site Area Emergency**) for notifications and actions to be taken.

2. Site Area Emergency:

Events are in progress or have occurred which involve actual or likely major failures of facility functions needed for protection of workers and the public. Any release of hazardous materials (radiological or non-radiological) is expected to exceed appropriate (PAG or ERPG) exposure levels onsite, but is not expected to exceed the appropriate PAG's or ERPG's offsite. The purpose of a Site Area Emergency is to ensure that EOC's are staffed and operational, appropriate monitoring teams are dispatched, and personnel required for determining offsite protective measures are immediately available.

Contamination levels listed above could extend as far as ten miles from the Rocky Flats Plant. This level of contamination could require protective actions such as in place sheltering. Under the most unfavorable conditions this could include the cities or communities of Broomfield, Lafayette, Louisville, Superior, Marshall, Eldorado Springs, and the City of Boulder approximately as far north as Iris and 28th Streets.

If a **Site Area Emergency** occurs the BRCC will complete the Boulder County fan-out to include Broomfield, Lafayette, Louisville, Superior and Eldorado Springs.

The Boulder Office of Emergency Management will assume responsibility for notification of personnel listed in Appendix 7 of this plan.

Portions of this list may be redundant with the BRCC notification checklist.

The Emergency Management Director will respond to the Emergency Operations Center as the MACS Facilitator. In his absence a trained radiological officer familiar with the MACS structure will act as the Facilitator.

Note: See Annex D for list of trained Radiological Officers and personnel trained in the MACS Positions.

The facilitator will inform city and county officials of the situation and advise them that evacuation is not needed but that in place sheltering may be required.

If a **Site Area Emergency** does not directly affect Boulder County, MACS Mode 3 is initiated. If this emergency extends into any portion of Boulder County, MACS Mode 4 is initiated. In either case warning and sheltering plans are reviewed and preparations made to implement these warning and sheltering plans should the Colorado Department of Public Health and Environment require them. Traffic Control Points (TCP's) are manned.

3. General Emergency:

Events are in progress or have occurred which involve actual or imminent catastrophic reduction of facility safety systems with potential for loss of containment or confinement integrity (e.g., release of large quantities of hazardous materials - radiological or non-radiological, that can reasonably be expected to exceed appropriate PAG or ERPG exposure levels offsite).

Contamination levels could extend as far as four miles from the Rocky Flats Plant. These levels of contamination could require protective measures up to and including evacuation. Under the most favorable conditions this level of contamination could include a portion of the southern section of Boulder County as far north as one-half mile south of the community of Marshall. But note that lesser levels of contamination in a **General Emergency** could extend as far as 10 miles from the plant and require the same protective actions, such as in place sheltering, as outlined in the **Site Area Emergency** Classification.

If a **General Emergency** is declared, MACS mode 4 is initiated whether or not the incident directly affects Boulder County.

All of the actions listed for a **Site Area Emergency** will be reviewed and preparations made to evacuate the public from areas of Boulder County that are within four miles of the Rocky Flats Plant.

The Facilitator will inform city and county officials of the situation and that in addition to in place sheltering, evacuation of parts of Boulder County may be required.

IV. NOTIFICATION PROCEDURES

Any operational emergency, **Alert, Site Area**

Emergency, or General Emergency requires the prompt notification of all appropriate authorities at the federal, state, and local levels within 15 minutes of classification.

Initial notification of an emergency will come from the Rocky Flats Emergency Operations Center Notification Officer. The primary notification system is the ConferTech Bridge. Backup systems are the METS (Metropolitan Emergency Telephone System and commercial telephone. (See Appendix 8 for notification form.)

Warnings to the general population issued via local government, the Emergency Alert System (EAS) and NOAA Weather radio for a **Site Area Emergency or General Emergency** and will contain:

- _____ A brief statement on the situation
- _____ A description of the area affected
- _____ Public protective or precautionary action to be taken
- _____ Additional information as appropriate

V. INCIDENT COMMAND POST

Although all Boulder County emergency response forces will remain under the control of their normal authorities as much as possible, coordination of all response forces will be through the Incident Command Post. The State of Colorado has overall responsibility during an operational emergency at the Rocky Flats Plant and will direct response activities for the State EOC through the Incident Command Post. The Jefferson County Sheriff's Department will be responsible to provide overall incident command at the Incident Command Post located in the Sheriff's hanger at the Jefferson County Airport.

Response agencies either located within the EPZ, those who provide support to response agencies or act as a coordination agency are required to provide representatives to the Incident Command Post. By existing agreement, the State OEM may request the Boulder Sheriff's Office communications van to assist at the Incident Command Post if it is not needed locally at the time of the request.

VI. ASSESSMENT OF CONTAMINATION IN BOULDER COUNTY

Should an accident occur at Rocky Flats Environmental Technology Site that involves offsite contamination, the plant has agreed to immediately respond to and provide all traffic control points manned by Boulder County with radiological

monitoring equipment, radiological protective clothing and trained personnel. The immediate response of Rocky Flats personnel to traffic control points is a very important part of the effort to provide effective protection of response forces and the public. However, a basic assumption of this plan is that the plant response may be delayed by unforeseen events at the plant, or for other reasons, and that Boulder authorities and their response forces will be required to operate for some period of time independent of Federal, State and Rocky Flats assistance. Until Rocky Flats, or the Colorado Department of Public Health and Environment arrives at the traffic control points designated in this plan, with radiological monitoring equipment, radiological protective gear and trained personnel, all decisions as to the protection of response forces and the public will be made by the Boulder County Health Department. Further, if there is little or incomplete information available on the extent, levels and types of contamination in Boulder County, the Boulder County Health department will determine, as best they can, with the equipment on hand, the levels, extent and type of the contamination in Boulder County.

The Colorado Department of Public Health and Environment (CDPHE) will coordinate all contamination measurements through the Incident Command Post.

The Department of Energy, the Colorado Department of Public Health and Environment, and the Federal Emergency Management Agency have trained radiological monitors with equipment suitable for monitoring alpha contamination. These state, federal and industry resources will be made available to the Boulder area should the need arise and higher priorities do not exist elsewhere. It is important to remember that outside of the Boulder County Health Department (BCHD), our local people do not have instruments to assess alpha contamination. Further, the BCHD has very limited equipment capabilities for monitoring alpha contamination. Should the incident involve beta-gamma contamination there are considerable local capabilities available in trained radiological monitors, trained radiological officers, survey instruments, dosimeters, etc.

The Department of Energy and the plant contractor will make radiological assessment of contamination on the Rocky Flats site. This assessment may allow rough extrapolations to probable levels of contamination outside the Rocky Flats site in the Boulder area.

Assessment of contamination in Boulder County will be performed or coordinated by the Colorado Department of Public Health and Environment, with

the assistance of the Boulder County Health Department using all state, federal and industry resources as may be available. All assessment team readings will be transmitted to the CDPHE representative at the Incident Command Post either directly, if communications are available to the assessment teams, or through the Boulder Regional Communications Center.

In addition to ground surveys of Boulder County, air surveys will be conducted by CDPHE. If requested by the CDPHE, Boulder County Health Department will change air filters in the air sampling equipment at Longmont, Broomfield and Boulder.

WASTE ISOLATION PILOT PROGRAM (WIPP) SHIPMENTS - In addition to offsite contamination from the plant facility, there is the possibility of contamination from radioactive shipments from the plant to internment areas such as at Carlsbad, New Mexico. These shipments consist of low level radioactive wastes and are not a major threat. However, since these shipments will enter Boulder County (County Road 128 just outside Broomfield), they must be considered in the overall planning for radiological events related to Rocky Flats.

If a transportation accident were to occur with these shipments the Department of Energy (DOE), the Colorado Department of Public Health and Environment, the plant contractor and many other state and federal agencies would be involved in the response effort. The role of county agencies and the City of Broomfield Police Department would be one of assistance to these agencies with the general features of this Rocky Flats Response Plan applicable for manning traffic control points, decontamination and public warnings.

VII. COMMUNICATIONS

The Boulder Regional Communications Center will be the control point for the flow of information between the Incident Command Post and local response forces.

The primary mode of communication will be the ConferTech Bridge system. Backup systems include commercial telephone and the METS System. Assistance from amateur radio resources will be requested by the director of Boulder Regional Communications Center, if needed.

VIII. IN PLACE SHELTERING OR WARNINGS TO EVACUATE

A *Site Area Emergency* may require in place

sheltering and a **General Emergency** may require both in place sheltering and evacuation. The determination of the category of an incident and if in place sheltering or evacuation is required, is the responsibility of the Colorado Department of Public Health and Environment. Samples of messages to the public advising of the need to take precautions or to evacuate are included in this section of the plan. If either a **Site Area Emergency** or a **General Emergency** impacts any portion of Boulder County the following warning systems will be activated and the appropriate message disseminated:

Primary Denver Emergency Alert System (EAS)

Notify the primary monitoring source, KOA Radio at 303-892-4874. Normally the EAS system will be activated by the State OEM or the Colorado Department of Public Health and Environment with appropriate messages for the affected areas. If this has not been done and the County Health Department decides warnings must be immediately disseminated then KOA will be asked to repeat the appropriate message for affected areas within Boulder County.

NOAA Weather Radio - Provide the Lead Forecaster at the 24 hour number 303-494-4479, with the appropriate warning message. The National Weather Service will call the Boulder Regional Communications Center to confirm that an emergency exists before issuing the warnings.

Citizens Alert Radio is activated by the Boulder Regional Communications Center.

Local fixed warning sirens---steady signal. Broomfield, Boulder, Louisville, Lafayette, Marshall, Eldorado Springs and Superior have either fixed warning sirens or local fire department sirens that will be activated if the communities are affected.

Voice Override Cable Television - Voice Override for the City of Boulder is available through BRCC, and for the cities of Longmont, Louisville, Lafayette, and Broomfield through their police departments. This warning capability exists for all persons subscribing to a cable TV service and residing within these municipalities. Broomfield Police can also reach all residents of Boulder County subscribing to Jones Intercable.

Law enforcement and fire vehicles with sirens and public address systems will be dispatched within affected municipalities. Warning routes for these vehicles will normally be designated by the Colorado Department of Public Health and Environment. If route designations are delayed and the County Health Department decides warnings must be immediately given to the public they will designate warning routes

for emergency vehicles. Lists of public schools and nursing homes in Boulder County within the ten miles of Rocky Flats Plant are included in this plan.

Sheriff vehicles and rural fire department vehicles with sirens and public address systems will be dispatched to rural areas and small communities such as Marshall, Superior, and Eldorado Springs. Warning routes for these vehicles will normally be designated by the Colorado Department of Public Health and Environment. If route designations are delayed and the County Health Department decides warnings must be immediately given to the public, they will designate warning routes for emergency vehicles.

Sample Message From Boulder County Authorities Requiring In Place Sheltering

1. The Rocky Flats Plant has experienced an incident which may have resulted in the release of some radioactive material. Some precautionary measures are being implemented at this time.
2. The area affected lies in a quadrant to the (direction) of the facility site for a distance of (mileage) (description of affected area).
3. All persons who are in this area are asked to remain (under cover) in their homes and to close all doors and windows until further notification. Do not evacuate. There is no immediate threat.
4. Notification for further action (i.e., all clear, evacuation) will be forthcoming from local authorities or over commercial public broadcasting stations.

This message will be used either when directed by the Colorado Department of Public Health and Environment or by the Boulder County Health Department.

Sample Message From Boulder County Authorities Requiring Evacuation

1. The Rocky Flats Plant has experienced an incident which resulted in the release of some radioactive material. Precautionary measures are being implemented at this time.
2. The area affected lies in a quadrant to the (direction) of the facility site for a distance of (mileage) (description of affected area).
3. All persons who are in this area are asked to evacuate the area within the next (time period),

prior to _____ today) by proceeding to the (designated point), (monitoring or reception locations).

4. Further information will be available at that location or will be transmitted over commercial public broadcasting stations as it becomes available.

These messages will be used either when directed by the Colorado Department of Public Health and Environment or by the Boulder County Health Department.

IX. EVACUATION PROCEDURES

Forcible evacuation is authorized under the Colorado Disaster Emergency Act of 1973 when ordered by the Governor. However, time and resources may not permit more than warnings to residents of contaminated areas and forcible evacuation may not be a feasible nor desirable action.

The only heavily populated area in Boulder County that is within 4 miles of Rocky Flats is the Rock Creek Subdivision near Superior. (Only a portion of this subdivision is within 4 miles, but for planning purposes the entire area will be considered.) Evacuation of areas in other jurisdictions into Boulder County may place a heavy demand on Boulder County resources.

As with warning routes, evacuation routes will be established by the Colorado Department of Public Health and Environment. Procedures for evacuation routes follow the procedures for warning routes.

X. PROTECTIVE PROCEDURES FOR TCP WARNING EVACUATION AND ASSESSMENT PERSONNEL

The following guidelines should be followed by response personnel when required to enter contaminated areas during a **General Emergency**:

_____ All warning, evacuation and response personnel will enter and exit contaminated areas through established traffic control points.

_____ They will be registered with the traffic control point for later follow up actions by health authorities. Times of entry and exit will be noted by traffic control points.

_____ Times allowed for personnel to stay inside

contaminated areas will be obtained from the Colorado Department of Public Health and Environment before entering contaminated areas. These times will not be exceeded.

_____ If dosimeters or film badges are required by the Colorado Department of Public Health and Environment for response personnel they will be issued prior to entering the controlled area.

_____ Wear clothes that do not leave areas of the body exposed.

_____ Masking tape should be used around the ankles, wrists and between the shoulder area and the headress.

_____ Gloves should be worn.

_____ Particulate filters should be used.

_____ These procedures may be considered maximum precautions for contaminated areas and may be relaxed by the Colorado Department of Public Health and Environment.

_____ Response personnel entering contaminated areas could be scheduled for follow up physical exams and radionuclide assays.

Monitoring and decontamination procedures for people and vehicles evacuating contaminated areas are explained in the traffic control point procedures that follow.

XI. TRAFFIC CONTROL POINT PROCEDURES

In the event of **Site Area Emergency** or a **General Emergency** at the Rocky Flats Plant, traffic control points (TCP's) will be established around the existing or projected areas of contamination to control access and evacuation. The TCP's will be designated by the Incident Command Post. The Colorado State Patrol is responsible for coordinating the establishment of these TCP's, of which five are located within Boulder County. These TCP's and the agency (Colorado State Patrol, Boulder County Sheriff, and Broomfield Police) responsible for manning the TCP are shown on the map included in this plan.

In the event an evacuation is ordered, the TCP's form the controlled area boundary.

The following information and instructions to TCP

personnel provide necessary actions to protect themselves, the public, warning and evacuation personnel, and radiological assessment teams who will be entering and exiting the contaminated areas controlled by the TCP's.

Non emergency vehicles approaching the controlled area will be denied access during all three classifications of emergencies.

Traffic on main arteries will be routed to avoid controlled areas and to prevent interference with emergency forces and evacuation routes.

Vehicles and personnel leaving the controlled area will be stopped and monitored for radioactive contamination. The Colorado Department of Public Health and Environment, the Department of Energy, Rocky Flats Plant or the Federal Emergency Management Agency, with the assistance of Boulder County Health Department, will provide trained personnel with monitoring equipment at these TCP's.

Contaminated vehicles in excess of 220 disintegrations per minute (DPM) per 100 square centimeters will be impounded at the TCP to prevent spreading the contamination. A location inside the controlled area or near the controlled area will be established for decontaminating vehicles. Only trained radiological monitoring crews will be used for establishing holding areas to be used for decontamination and for decontaminating vehicles.

All emergency personnel as well as the public entering or leaving the controlled area will be registered for possible follow up evaluation by health authorities. Registration also serves to identify those people who may be required to reenter the controlled area to assist in the control of farm animals or other activities. Samples of registration forms are included in Appendix 4 of this plan.

All personnel leaving the controlled area will be monitored for radioactive contamination. Personnel with readings in excess of 220 DPM per 100 square centimeters will be decontaminated as much as possible at the TCP before being sent to a reception center for further monitoring and decontamination if needed. Decontamination at the TCP can be as elaborate as showers and a change of clothes, if portable water supplies are available, to simple wet wipes (wet paper towels with soap if available).

Locations of reception centers established to further monitor, decontaminate, provide a change of clothing, feed and provide shelter to evacuees will be given TCP personnel by the Incident Command Post. Locations of these reception centers will be given to

evacuees before they leave the TCP. If possible, an estimated time for reentry to the controlled area will also be given to the evacuees before they leave. The following predesignated reception centers will be used:

- C Boulder High School
- C Lyons Jr.- Sr. High School (Alternate)
- C Longmont High School (Alternate)

Ambulances or Boulder Valley and St. Vrain School District busses will be used to transport evacuees to medical facilities and reception centers.

The map in Appendix 5 shows a general location of the Incident Command Post.

Since it is impossible to issue identification cards to all emergency forces, the following guidelines for authorizing access into controlled areas through TCP's will be followed:

_____ Members of law enforcement will be assumed to be responding under proper authority and will be authorized access.

_____ Individual recognition of non-uniformed response forces can be made by TCP personnel and access authorized. These personnel as well as law enforcement personnel can in turn vouch for other response personnel who they recognize.

_____ Individuals named by their respective Emergency Operations Centers to the Incident Command Post will be authorized access through personal identification e.g., drivers license, social security card etc.

_____ All personnel authorized access will be issued identification. This identification will serve as access authorization through any TCP.

There is a possibility that TCP personnel will be exposed to contamination and should therefore read and follow the protective measures for response personnel in the section ***Protective Procedures For TCP, Warning, Evacuation And Assessment Personnel.***

XII. BOULDER ROCKY FLATS INCIDENT COMMAND SYSTEM

Depending on the impact on Boulder County, the incident command structure can vary from incident control within each Traffic Control Point to a common

organizational structure i.e., a single Incident Command System in which all personnel from assisting agencies will assume positions.

The ICS will allow a gradual evolution to a major incident command structure by periodic additions of specific positions to an already existing organization. The Emergency Operations Center, located in the Public Safety Building, allows certain basic and essential elements of the incident command system to be immediately activated namely:

- _____ Overall Command
- _____ Operational Planning
- _____ Incident Control Operations (warning, evacuation, traffic control, assessment).
- _____ Logistical Support of Operations (expenditures of resources, supplies, and equipment will not be of the magnitude as, for example, large fire suppression operations. Finance is contained within Logistical Support).

Although Boulder County emergency response forces will remain under the control of their normal authorities as much as possible, coordination of all response forces will be accomplished through the Incident Command Post at the Jefferson County Airport. This superimposes a command structure that must be incorporated into overall planning and organization. The Incident Command System recognizes this need for overall coordination between state and local levels.

The Boulder County Sheriff's Office, the Broomfield Police Department, the Colorado State Patrol, the Boulder County Health Department and the Colorado Department of Public Health and Environment will make up the bulk of the first response agencies to be involved. Assistance by the Federal Emergency Management Agency, the Department of Energy, municipal, county, state and federal agencies make up secondary response. (See Rocky Flats Incident Command Organization Chart, Appendix 6.)

XIII. ELEMENTS OF MACS - SPECIAL INSTRUCTIONS

FACILITATOR

In addition to the duties and functions outlined in the Basic MACS Plan - Annex A, the Facilitator should:

- _____ Consider the possibility that heavily populated communities to the south of Boulder County will be evacuated into Boulder County. This may create a significant drain on available local resources. If it appears that evacuees may exceed our capabilities, surrounding counties,

in particular, Larimer County, should be alerted to establish decontamination reception centers and provide medical facilities.

- _____ If possible, appoint trained Radiological Officers (RO's) familiar with the MACS structure, to the positions of Situation Officer and Resources Officer. RO's will likely be in short supply and these appointments must consider the possibly greater need for RO's in other operations. If the Incident Command System is implemented, RO's should be appointed to the positions of State Liaison Officer and Health Liaison Officer.

EMERGENCY OPERATIONS CENTER

In addition to duties as outlined in the Basic Macs Plan - Annex A, the Emergency Operations Center should be prepared to display, on Boulder County and contiguous county maps:

- _____ The Incident Command Post,
- _____ Traffic Control Points - normally, information comes from Colorado State Patrol through the Incident Command Post.
- _____ Vehicle and personnel decontamination areas, normally, information comes from the Colorado Department of Public Health and Environment through the Incident Command Post.
- _____ Reception Centers - the Facilitator or Red Cross will provide this information.
- _____ Contaminated areas - these areas should be shown by Emergency Classification. The Colorado Department of Public Health and Environment provides this information through the Incident Command Post.
- _____ Weather information, especially speed and direction of winds aloft. This information will be included in the situation update released every 30 minutes from the Incident Command Post.
- _____ Maps showing the maximum extended areas for a Site Area Emergency areas General Emergency within Boulder County, prepared and on file in the Emergency Operations Center. These maps identify schools and nursing homes within these extended areas and locate the predesignated TCP's within Boulder County.

RESOURCE ALLOCATION CENTER (RAC)

The RAC should anticipate the special needs of forces responding to the Rocky Flats accident. These include, but are not limited to:

_____ Radiological instruments, e.g., survey instruments, dosimeters, etc.

_____ Protective clothing and gear for response personnel, e.g., boots, gloves, headdress, particulate filters, masking tape, etc.

_____ Mass transportation from traffic control staging areas to reception centers.

_____ Decontamination facilities in addition to those mentioned in this plan.

_____ Clothing for contaminated victims at TCP's and reception centers.

BOARD OF DIRECTORS (BOD)

The BOD will consist of Commissioners and the City Managers of affected municipalities. During the initial phases of a major accident at Rocky Flats, there naturally will be considerable confusion as to the nature of the incident, its cause and the extent of the hazard outside the Rocky Flats site. Evaluation of the incident by trained specialists, operating under extreme conditions, may take considerable time. It is during this time of uncertainty that the greatest care must be taken by the Board of Directors, or their representatives, to provide accurate information to the general public. The BOD should be prepared to release, through one designated Public Information Officer, only that information that has been obtained through direct contact with appropriate authorities. All media queries concerning the general nature, cause and extent of the accident should be directed to the news center established by the Governor at Camp George West. Initial local press releases should be limited to information on the extent of the contamination and protective actions being taken within Boulder County.

APPENDIX 1 - MAP OF THE ROCKY FLATS PLANT

APPENDIX 1 - ROCKY FLATS PLANT AREA MAP

APPENDIX 1 - EMERGENCY RESPONSE EVACUATION AREAS AND EPZ POPULATION DATA

APPENDIX 2 - BOULDER COUNTY TRAFFIC AND ACCESS CONTROL POINTS

TCP #1 Highway 93 at Highway 128 Boulder Sheriff
TCP/ACP #2 . . . Highway 93 at Eldorado Springs Drive Boulder Sheriff
TCP/ACP #3 . . . McCaslin Boulevard South of Superior Boulder Sheriff
TCP #4 McCaslin Boulevard at Rock Creek Entrance Boulder Sheriff
TCP/ACP #7 . . . Simms Street at Highway 128
. Broomfield Police

APPENDIX 3 - TRAFFIC AND ACCESS CONTROL POINTS - EVACUATION AREAS

#	LOCATION	TYPE	AGENCY
1	Highway 93 at Highway 128	TCP	Boulder Sheriff
2	Highway 93 at Eldorado Springs Drive	TCP/ACP	Boulder Sheriff
3	McCaslin Boulevard South of Superior	TCP/ACP	Boulder Sheriff
4	McCaslin Boulevard at Rock Creek Entrance	TCP	Boulder Sheriff
5	McCaslin Boulevard at Highway 128	TCP	Colorado State Patrol
6	Indiana Avenue at Highway 128	TCP	Colorado State Patrol
7	Simms Street at Highway 128	TCP/ACP	Broomfield Police
8	Simms Street at 108th Avenue	TCP	Westminster Police
9	Simms Street at 100th Avenue	ACP	Westminster Police
10	Alkire Street at 86th Parkway	TCP/ACP	Arvada Police
11	Indiana Street at Highway 72	TCP	Arvada Police
12	Indiana Street at Leyden Road	TCP/ACP	Arvada Police
13	Indiana Street at 72nd Avenue	TCP/ACP	Colorado State Patrol
14	Quaker Street at 64th Avenue	TCP/ACP	Colorado State Patrol
15	Highway 93 at Leyden Road	TCP/ACP	Jeffco Sheriff
16	Highway 93 at Highway 72	TCP	Arvada Police
17	Highway 72 at Blue Mountain Road	TCP/ACP	Jeffco Sheriff

NOTE: In the event of an evacuation or a relocation, the Jefferson County Incident Commander in coordination with other local law enforcement agencies will have to consider additional traffic control points along Wadsworth Boulevard and at the Jefferson County Airport entrances to guide people into the Assistance Center. Should they require support, further coordination should be effected with Colorado State Patrol at the State Emergency Operations Center.

EVACUATION AREAS

AREA A Bounded by Highway 93 and Highway 72, north to Highway 128, east to Highway 128 and Indiana Street, south to Indiana and Highway 72, and west to Highway 93.

AREA B Bounded on the east and south by Highway 93 and Leyden Road, west-northwest to the Denver and Rio Grand Western Railroad, north along the railroad to the Boulder County Line, east to Highway 93, and south on Highway 93 to Leyden Road.

AREA C Bounded on the south by Highway 128, Highway 93 and the Boulder/Jefferson County Line to the Rio Grande Railroad tracks, on a line northeast to the terminus of the pavement of Highway 170 to the intersection of US Highway 36 and McCaslin Boulevard, southeast along US Highway 36 to a point due north of the intersection of Simms Street Highway 128, south along that line to the intersection of Simms Street and Highway 128, west along Highway 128 to the junction of Highway 93 to the Boulder/Jefferson County Line west to the Rio Grande railroad tracks.

AREA D Bounded by Highway 128 and Simms, south to Standley Lake, around the shore line of Standley Lake to 88th Street, west to Alkire, south to 82nd Avenue, and west to Indiana, north on Indiana to Highway 128.

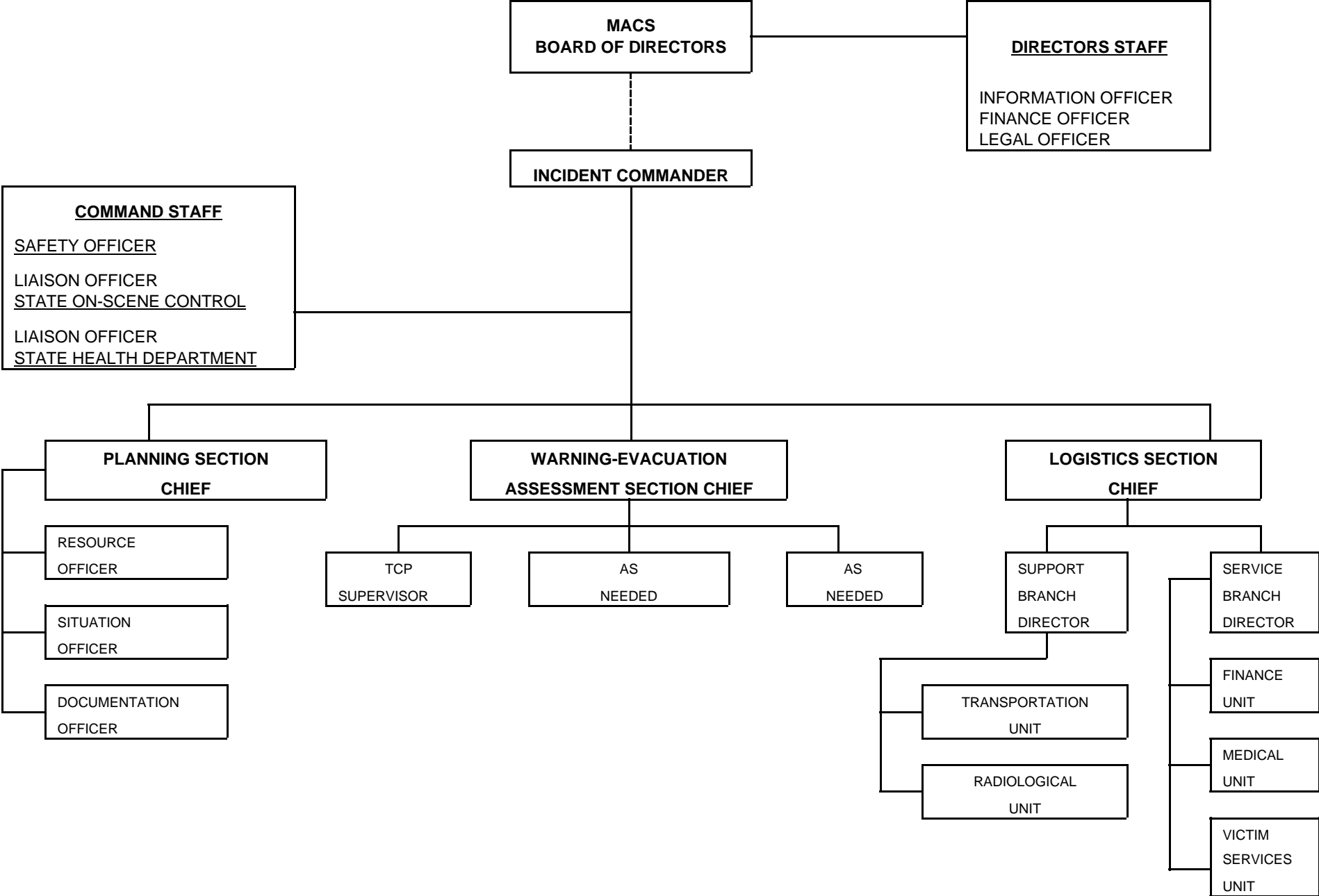
AREA E Bounded by Highway 72 and Highway 93 on the north, east to Highway 72 and Indiana, south to 82nd Street (Leyden Road), west to Highway 93 and north to Highway 72.

AREA F Bounded by 82nd Street (Leyden Road) and Highway 93 east to Indiana, south to 72nd Avenue, west past Quaker Street to Tucker Lake, around the lake to the north shore, and from the north shore of Tucker Lake on a line to Highway 93 and Leyden Road.

NOTE: TO BE USED WITH EMERGENCY MESSAGES
(May be changed when MACS work is completed)

APPENDIX 5 - INCIDENT COMMAND POST

APPENDIX 6 - BOULDER ROCKY FLATS INCIDENT COMMAND ORGANIZATION



E - 6 - 1

CHANGE 7 - DECEMBER 1995

**APPENDIX 7 - NOTIFICATION LIST
TO BE COMPLETED BY THE
BOULDER OFFICE OF EMERGENCY MANAGEMENT**

CITY-COUNTY PERSONNEL

Boulder County Health Director	441-1141*
Boulder County Environmental Health Director	441-1189*
Emergency Management Director	441-3637*
Boulder County Commissioners	441-3500*
City Manager	441-3090*
Deputy City Manager	441-3090*

BOULDER COUNTY HOSPITALS

Boulder Community Hospital	Emergency Room	440-2037
Wardenburg Student Health Center		492-5101
Longmont United Hospital	Emergency Room	651-5000

BOULDER COUNTY HEALTH CARE FACILITIES

Boulder Manor Health Care Facility	494-0535
Terrace Heights Health Care Center	442-4037
Good Samaritan Health Care Facility	449-6157
Centennial Peaks Recovery Unit	673-9990

BOULDER COUNTY SCHOOLS (10 Mile Radius)

RE-2 Boulder Valley Schools	Security-24 hour	442-2400
RE-1J St. Vrain Schools		776-6200
Sacred Heart School		447-2362
September School		444-5027

SOCIAL SERVICES

Director	441-1002
----------------	----------

RED CROSS

Disaster Chairman	442-0577*
-------------------------	-----------

*Can be paged through Boulder Regional Communications Center - 441-4444

APPENDIX 8 - ROCKY FLATS PLANT OFFSITE NOTIFICATION FORM

Report Sequence #:	Reason for Notification:	Type of Notification:	Start of Occurrence:			
Offsite Agency Support Requested From:		Occurrence Classification/Category:			Classification Time:	
Onsite Protective Actions Taken:		Offsite Protective Action Recommendation:		Area(s)		
				Miles		
Meteorological Information: From To Degrees Precipitation Wind Speed MPH Gusts MPH Stability Class: Type						
Dose Rates:	Onsite Projected:	Onsite Actual:		Offsite Projected:	Offsite Actual:	
Occurrence Prognosis:			Potential Offsite Health Risks:			

Description of Occurrence

Reviewed for Classification/UCNI By: By _____ Date _____	REVIEW/APPROVAL Crisis Manager _____ RFFO Manager _____ Time: _____
Notification Officer: _____ Date: _____ Time: _____	For Additional Information Contact (303) 966-3456